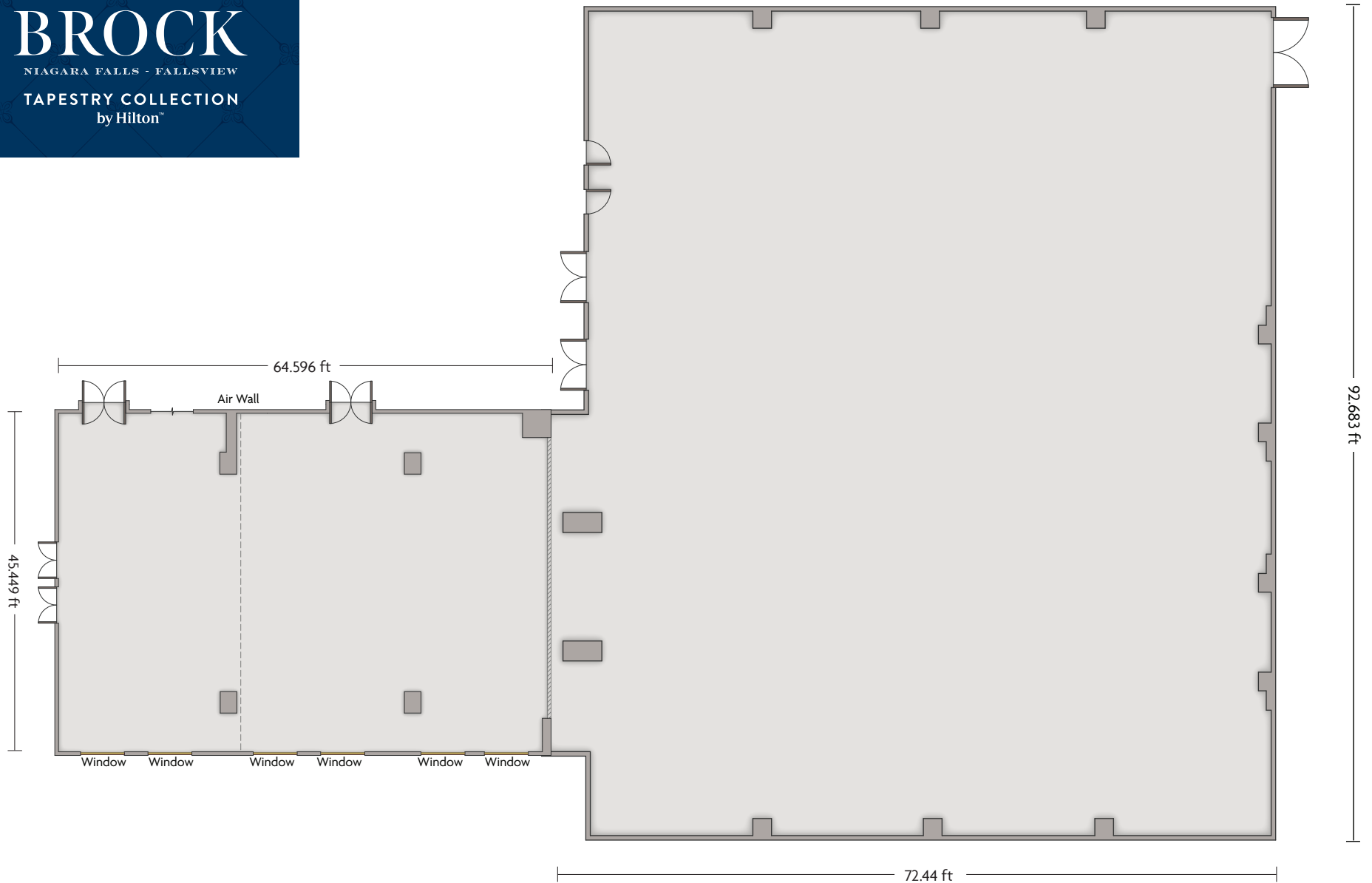


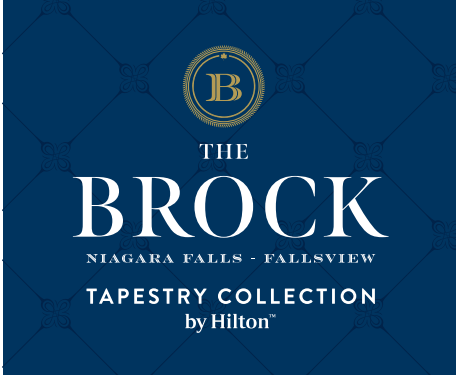


GRAND BALLROOM

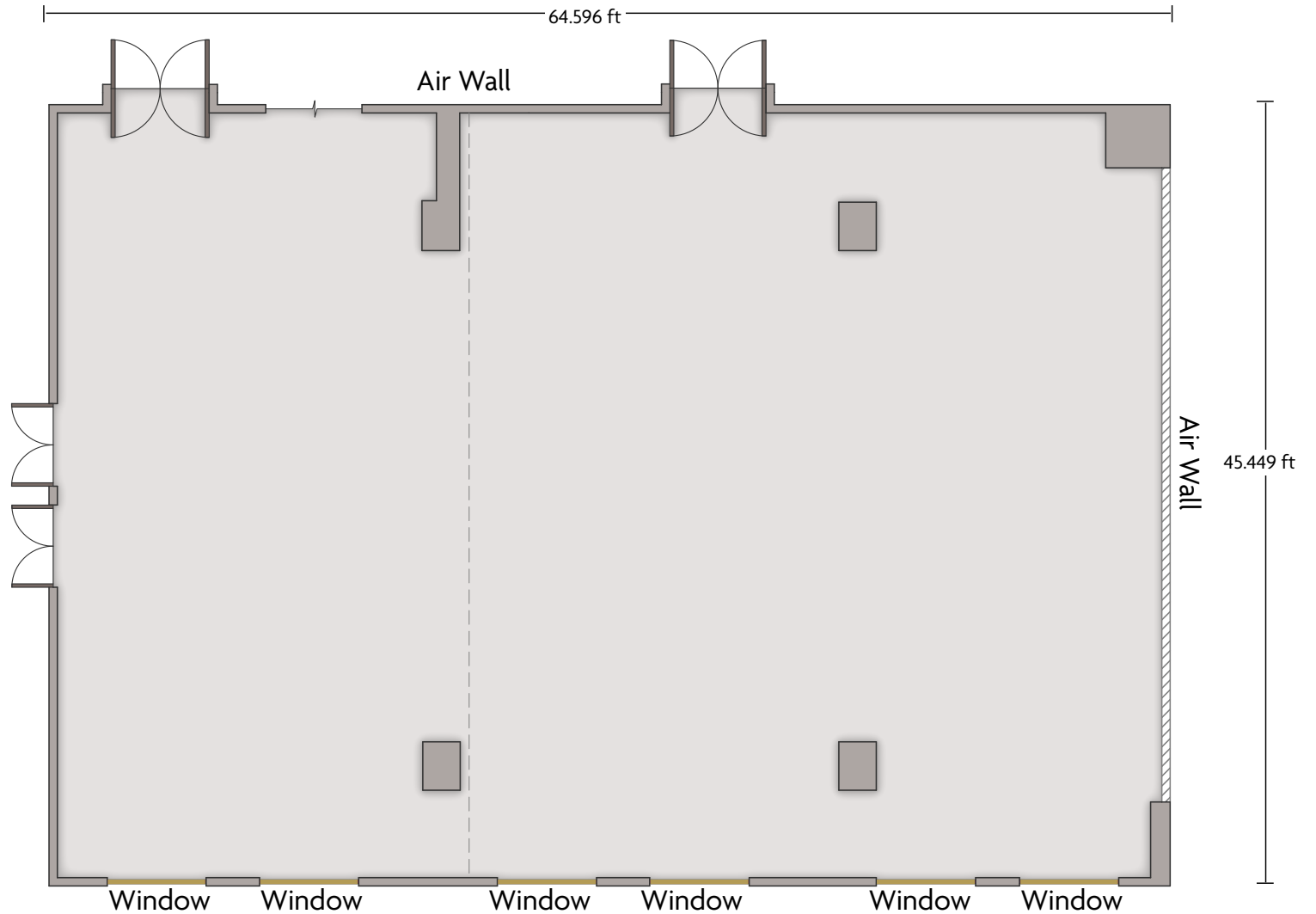


LENGTH: 137 ft. WIDTH: 92.683 ft. HEIGHT: 16.7 ft. TOTAL SQUARE FEET: 7578 sq.ft. MAXIMUM CAPACITY: 830 POWER OUTLETS: 30

*Multiple layout options available for this space

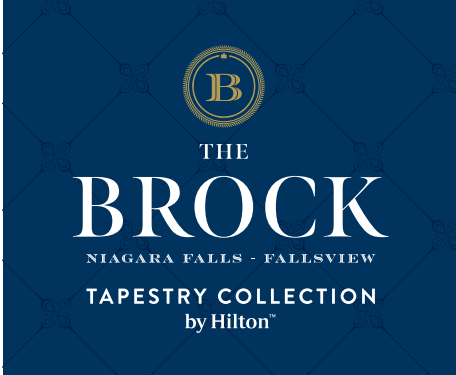


BROCK ROOM

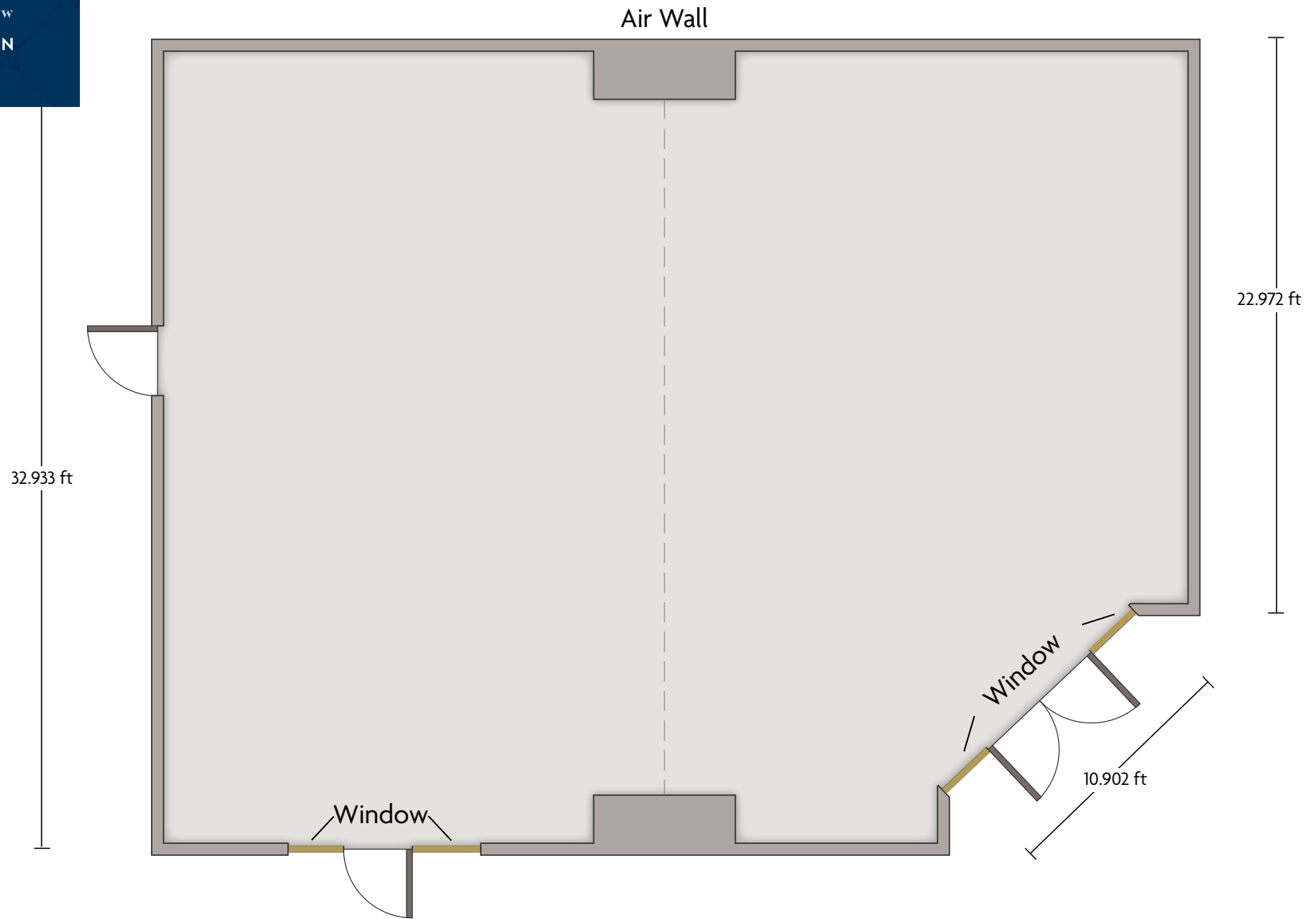


LENGTH: 64.5 ft. WIDTH: 45.4 ft. HEIGHT: 15.9 ft. TOTAL SQUARE FEET: 2945 sq.ft. MAXIMUM CAPACITY: 180 POWER OUTLETS: 17

*Multiple layout options available for this space

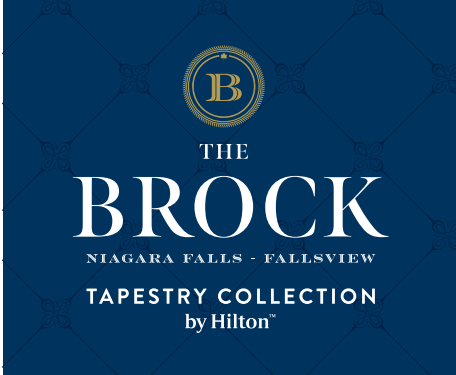


CANADIAN ROOM A/B

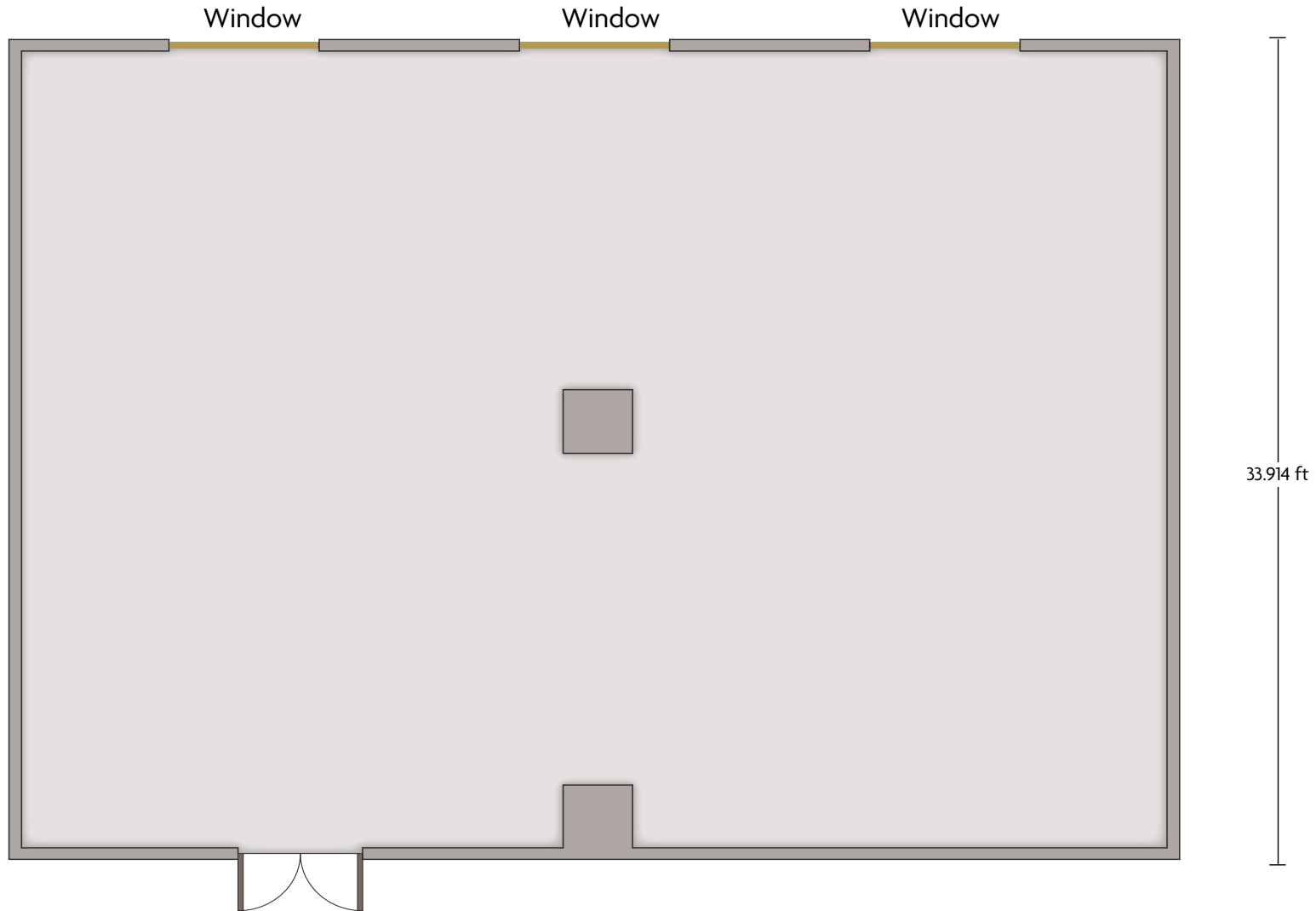


LENGTH: 42.5 ft. WIDTH: 32.9 ft. HEIGHT: 9.8 ft. TOTAL SQUARE FEET: 1396 sq.ft. MAXIMUM CAPACITY: 130 POWER OUTLETS: 7

*Multiple layout options available for this space

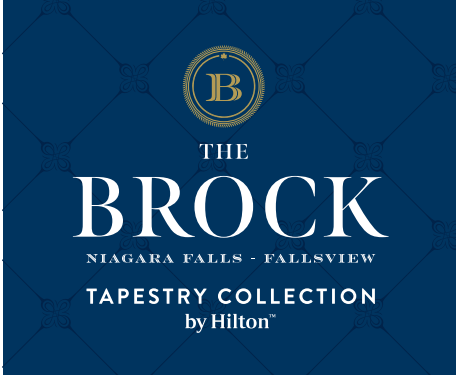


ELIZABETH ROOM

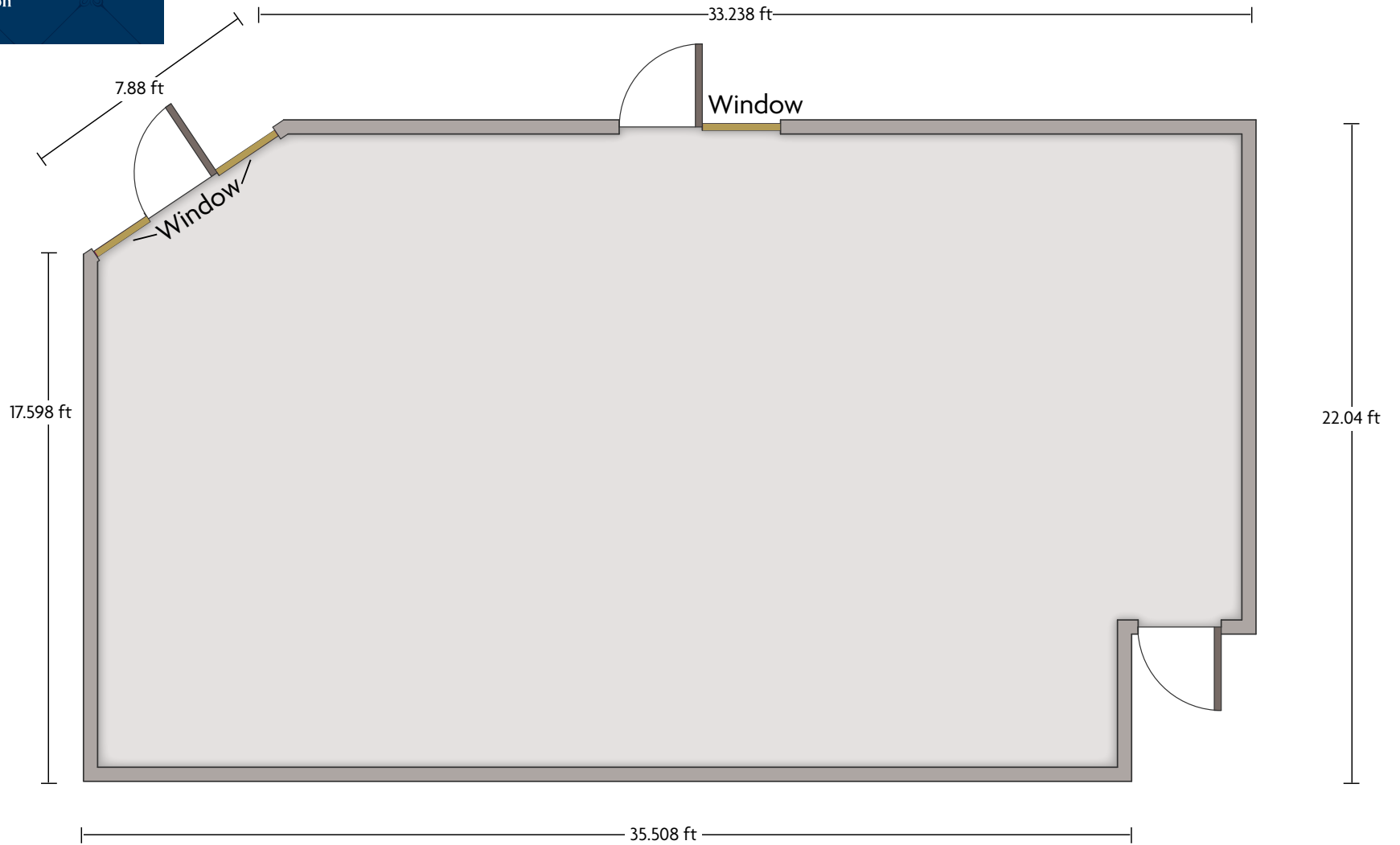


LENGTH: 44.7 ft. WIDTH: 33.9 ft. HEIGHT: 14.2 ft. TOTAL SQUARE FEET: 1523 sq.ft. MAXIMUM CAPACITY: 130 POWER OUTLETS: 19

*Multiple layout options available for this space

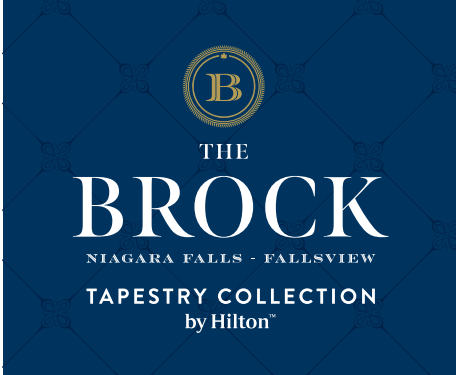


KING GEORGE ROOM

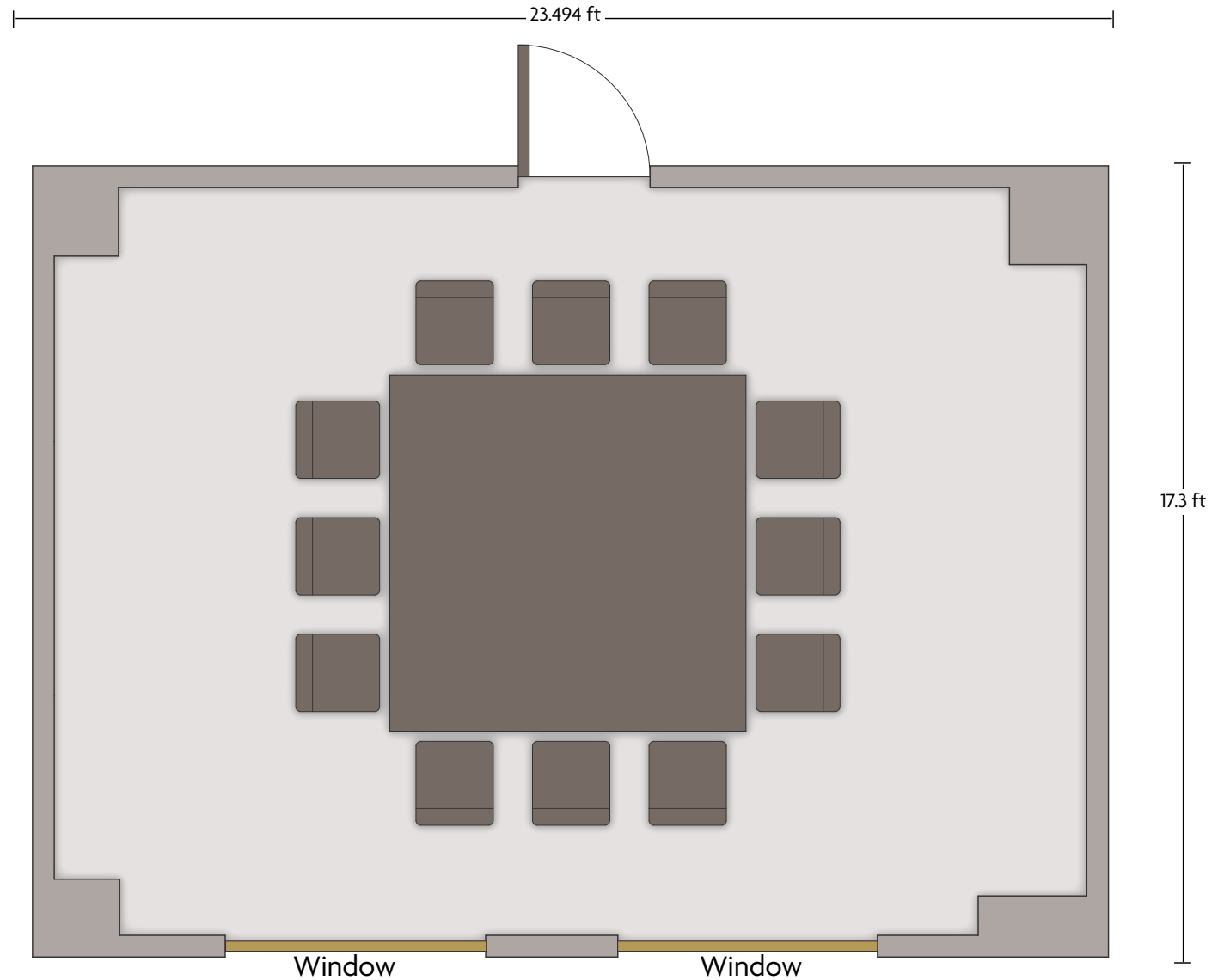


LENGTH: 39.8 ft. WIDTH: 22.04 ft. HEIGHT: 9.8 ft. TOTAL SQUARE FEET: 8408 sq.ft. MAXIMUM CAPACITY: 90 POWER OUTLETS: 9

*Multiple layout options available for this space



LOBBY BOARDROOM

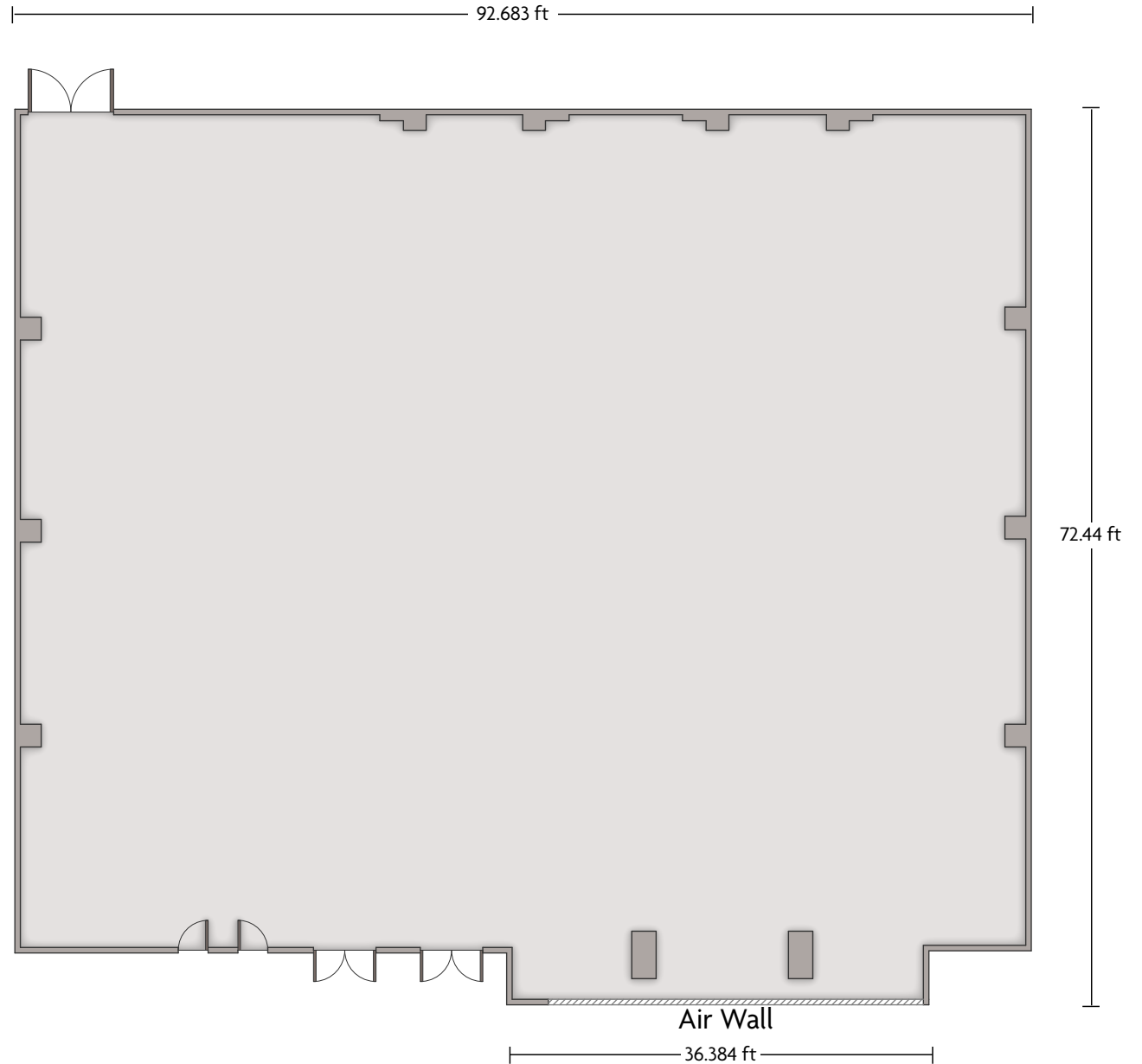


LENGTH: 23.4 ft. WIDTH: 17.3 ft. HEIGHT: 7.8 ft. TOTAL SQUARE FEET: 387 sq.ft. MAXIMUM CAPACITY: 12 POWER OUTLETS: 5

*Multiple layout options available for this space

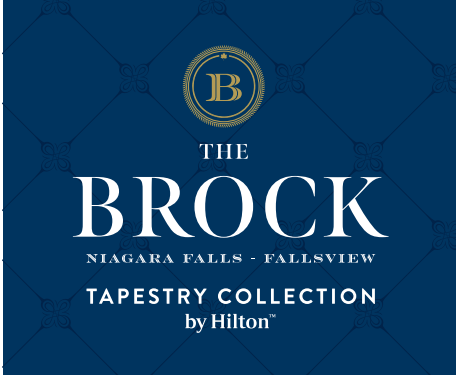


NIAGARA ROOM

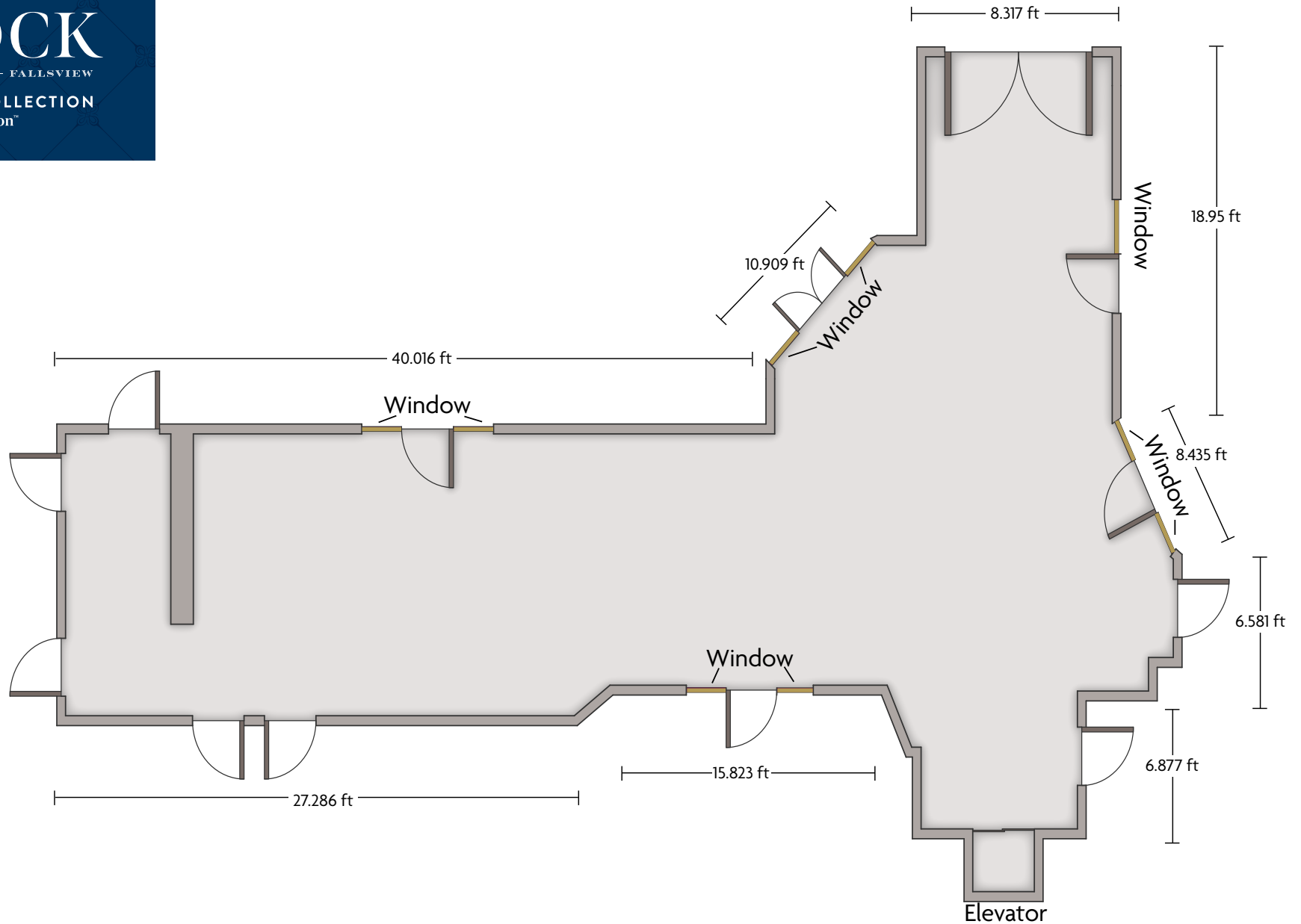


LENGTH: 92.6 ft. WIDTH: 72.4 ft. HEIGHT: 16.7 ft. TOTAL SQUARE FEET: 6825 sq.ft. MAXIMUM CAPACITY: 650 POWER OUTLETS: 13

*Multiple layout options available for this space

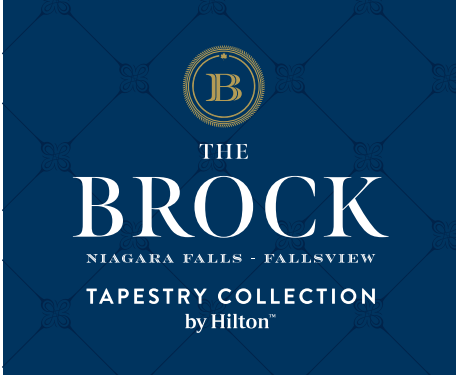


PRE-FUNCTION SPACE

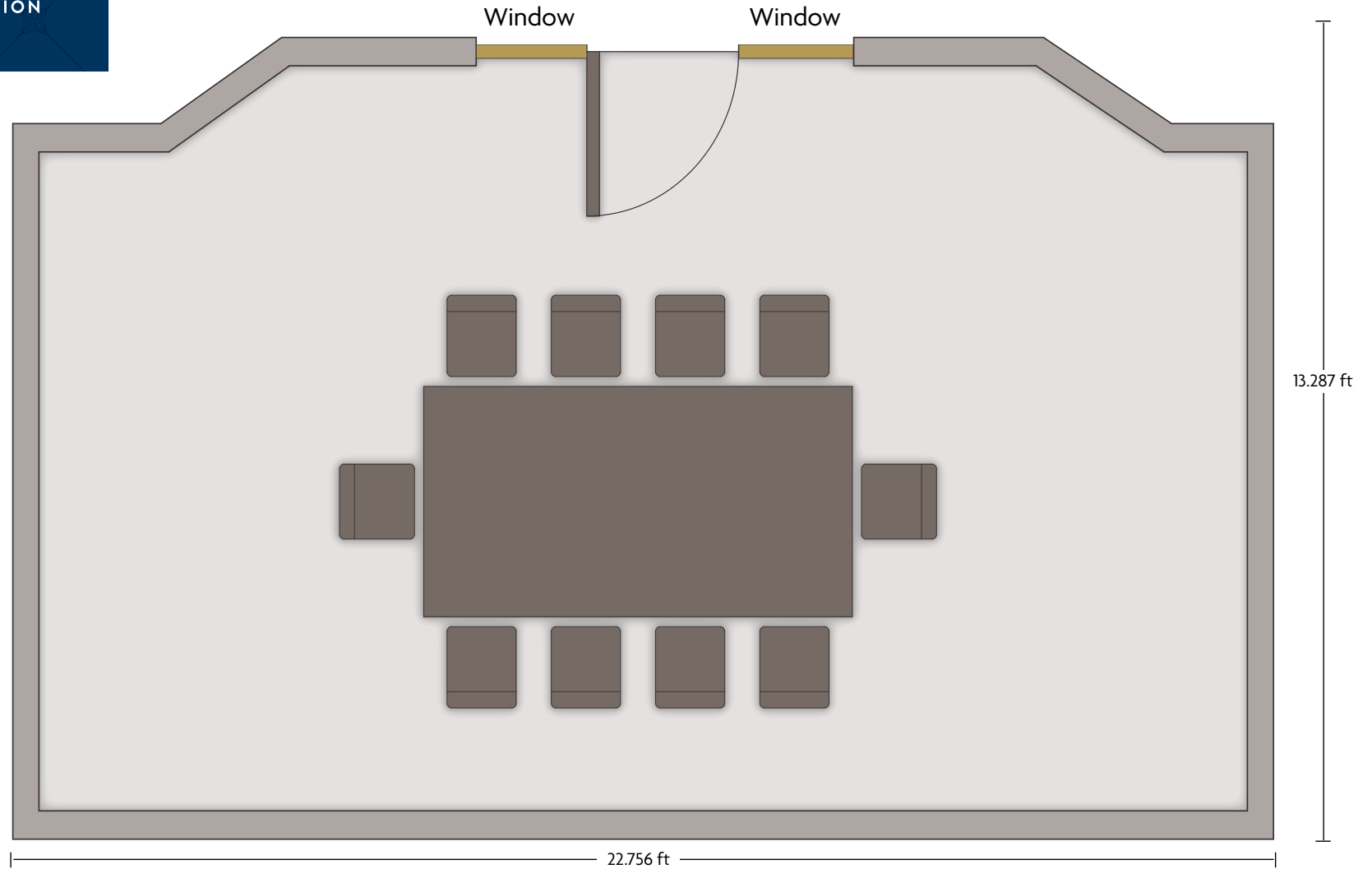


LENGTH: 56.7 ft. WIDTH: 39.1 ft. HEIGHT: 9.9 ft. TOTAL SQUARE FEET: 1133 sq.ft MAXIMUM CAPACITY: 200 POWER OUTLETS: 3

*Multiple layout options available for this space



SIMCOE ROOM

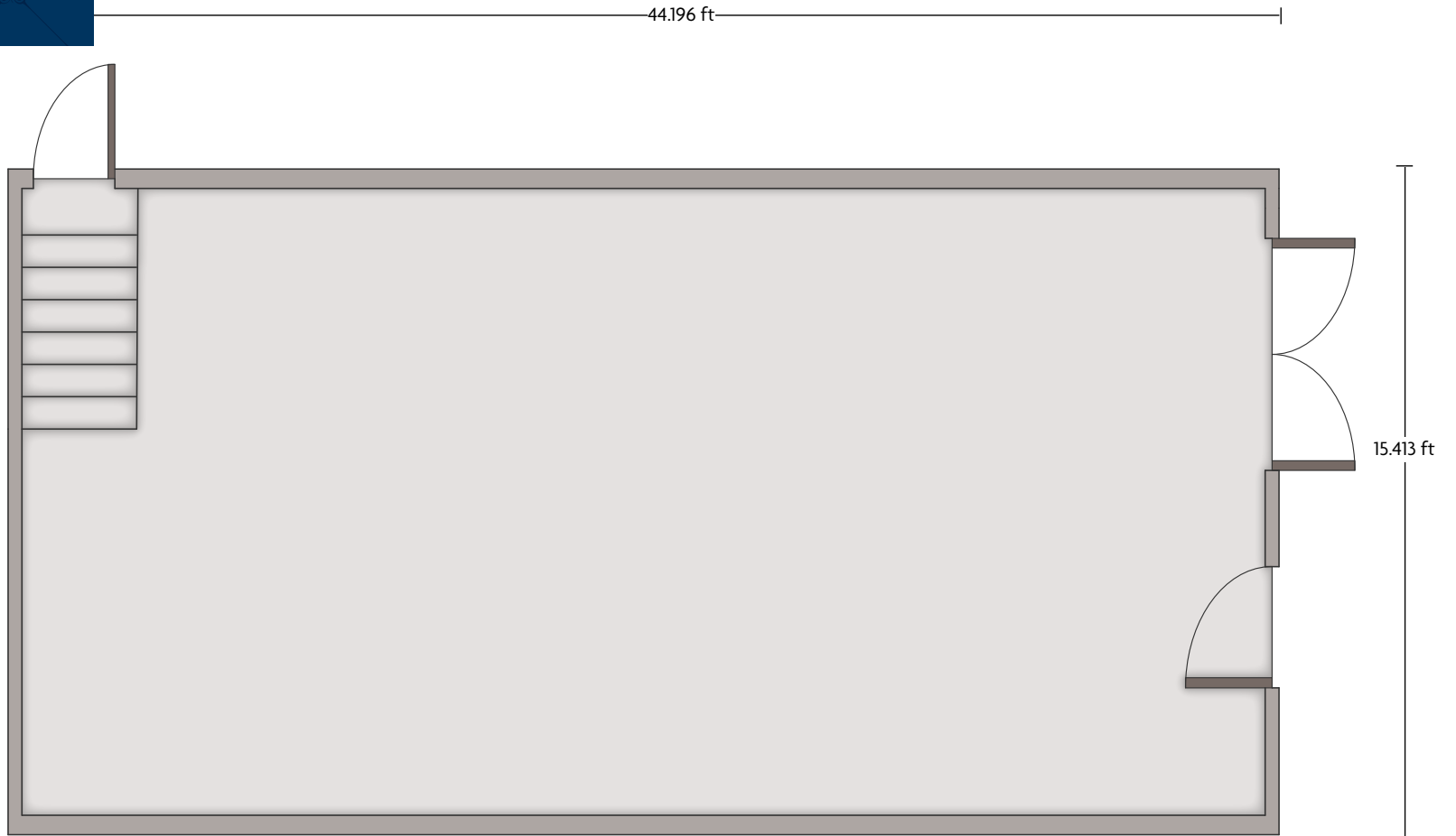


LENGTH: 22.7 ft. WIDTH: 13.2 ft. HEIGHT: 9.8 ft. TOTAL SQUARE FEET: 285 sq.ft MAXIMUM CAPACITY: 12 POWER OUTLETS: 5

*Multiple layout options available for this space



VICTORIA ROOM

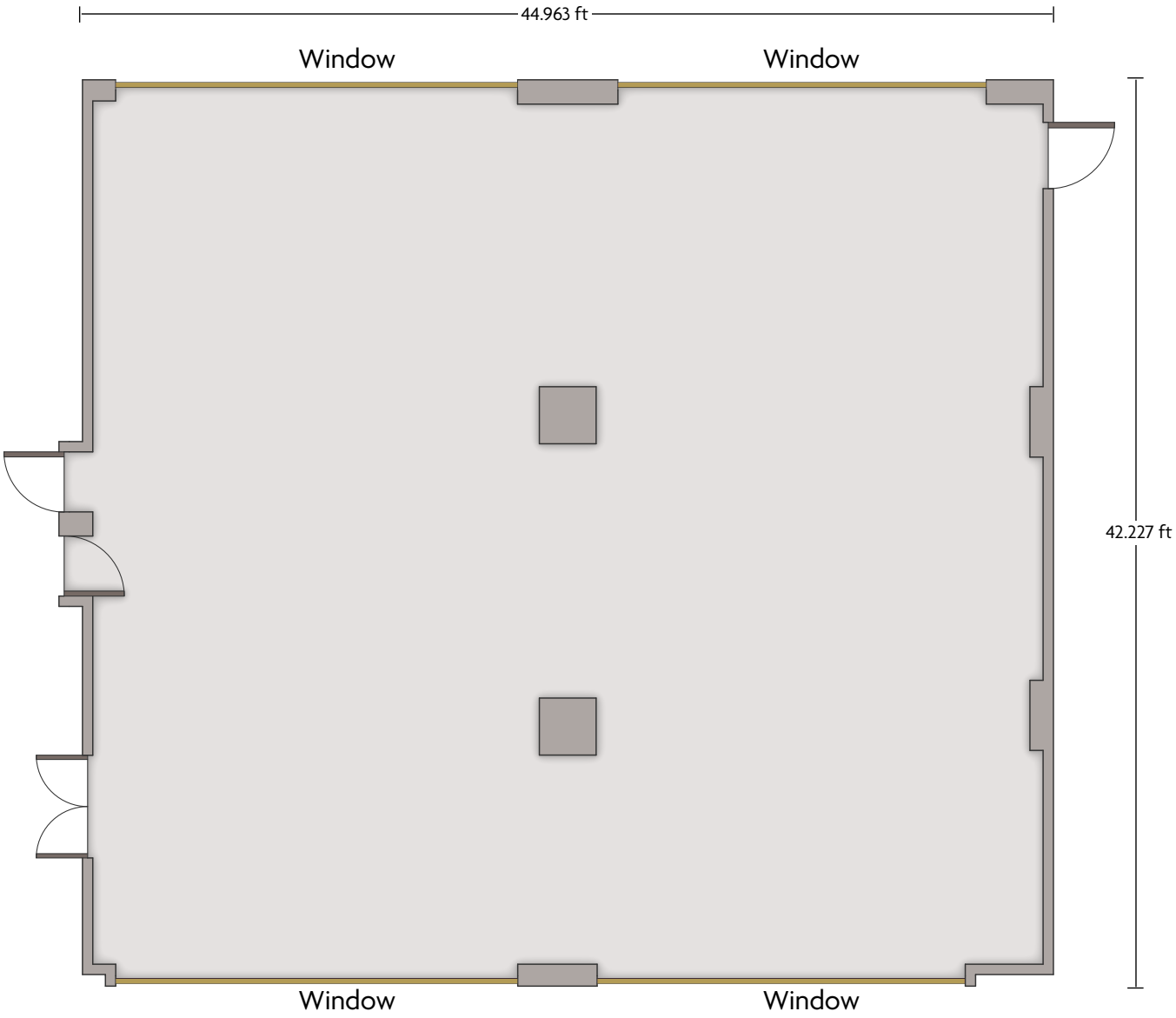


LENGTH: 44.1 ft. WIDTH: 15.4 ft. HEIGHT: 10.3 ft. TOTAL SQUARE FEET: 702 sq.ft. MAXIMUM CAPACITY: 65 POWER OUTLETS: 7

*Multiple layout options available for this space



RAINBOW SALON



LENGTH: 44.9 ft. WIDTH: 42.2 ft. HEIGHT: 9.7 ft. TOTAL SQUARE FEET: 1910 sq.ft MAXIMUM CAPACITY: 160 POWER OUTLETS: 14

*Multiple layout options available for this space